

---

# International Property Manager Installation Manual

---

*Demonstration Version*

*Manual Version 1.0, 29/05/2008*

## Introduction

This manual explains how to install the demonstration version of International Property Manager.

Before installing International Property Manager, please note the following:

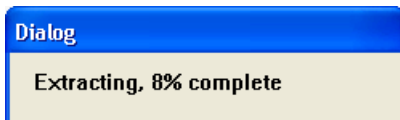
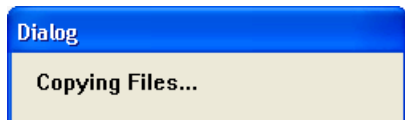
1. You must have Administrator rights on the computer where you install International Property Manager.
2. As part of the installation procedure, you will be asked for an Activation Code. On the same window, you will be given instructions on how to obtain the code. The software cannot be used without an Activation Code.
3. The Activation Code will be set to expire on a specific date, after which the software will be unusable. We reserve the right not to issue further Activation Codes.

## Installation of International Property Manager

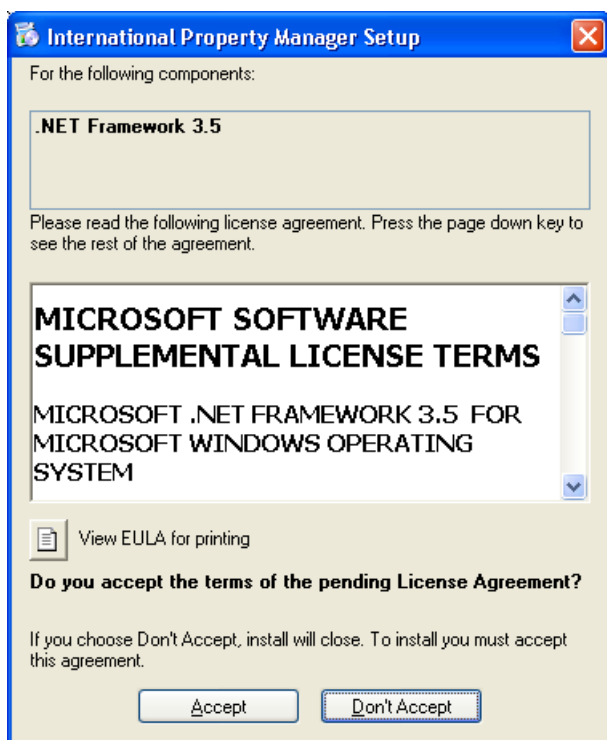
Please ensure that you are logged on as an Administrator user.

### Installing the Property Manager application

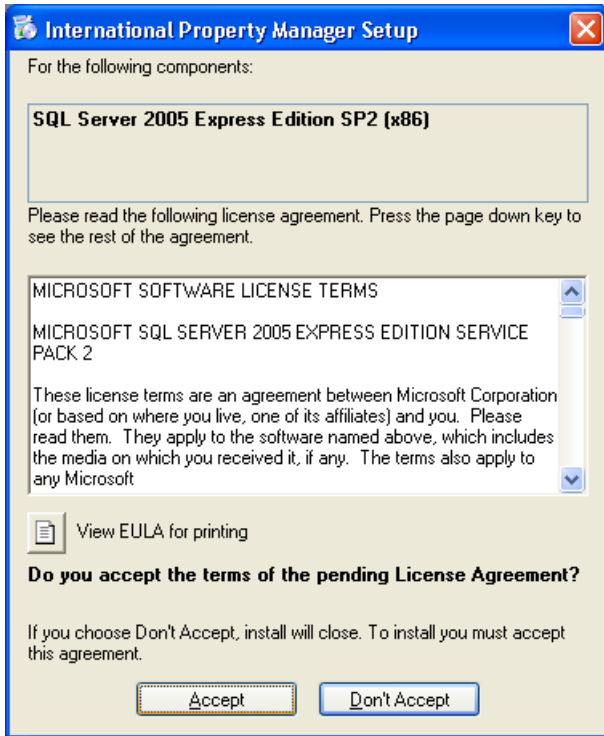
- 1) If you have not already done so, download the file *ipm\_demo.exe* from [www.internationalpropertymanager.com](http://www.internationalpropertymanager.com).
- 2) Start the installation by double-clicking the file *ipm\_demo.exe*.
- 3) The installer will extract all required files to the *Temp* folder on your computer.



- 4) Setup will then install any prerequisites that are not already installed on your computer. If you see the following window, click on *Accept*.



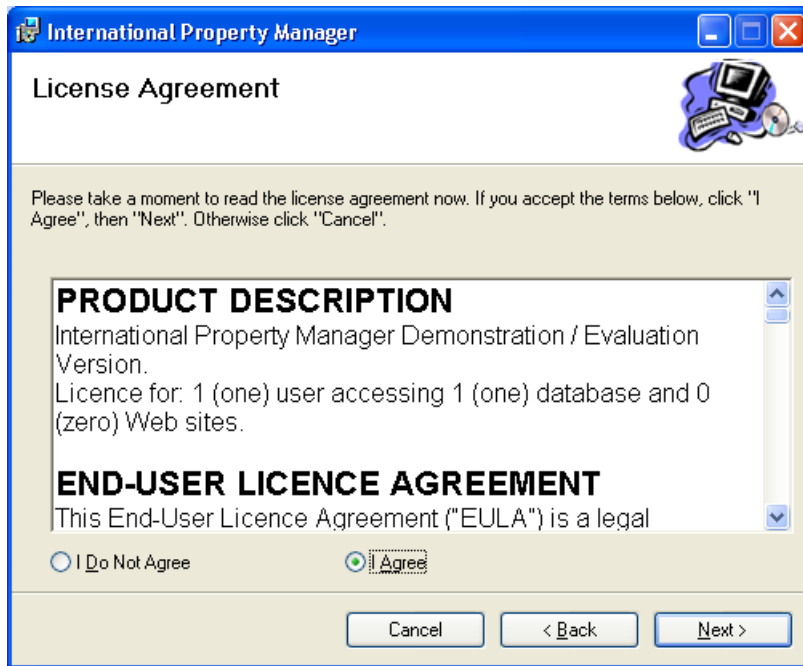
5) Similarly, if you see the following window, click on **Accept**.



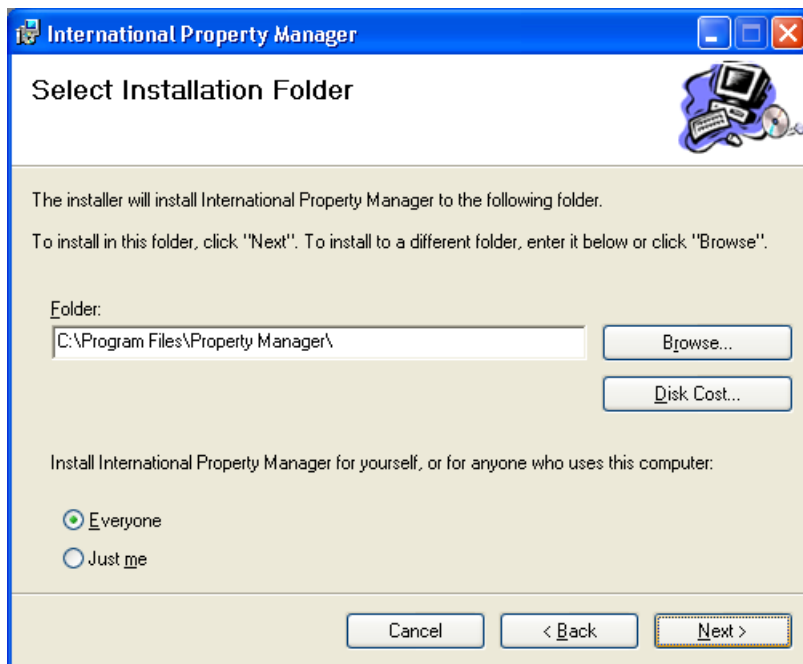
6) When setup has installed any missing prerequisites, you will see the following window. Click **Next** to begin the installation.



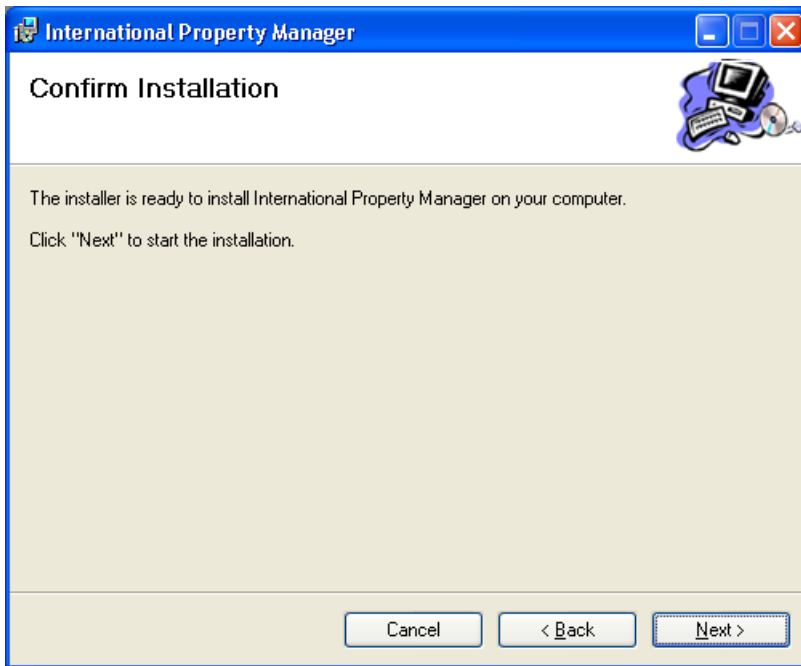
7) Agree to the End User Licence Agreement and click *Next*.



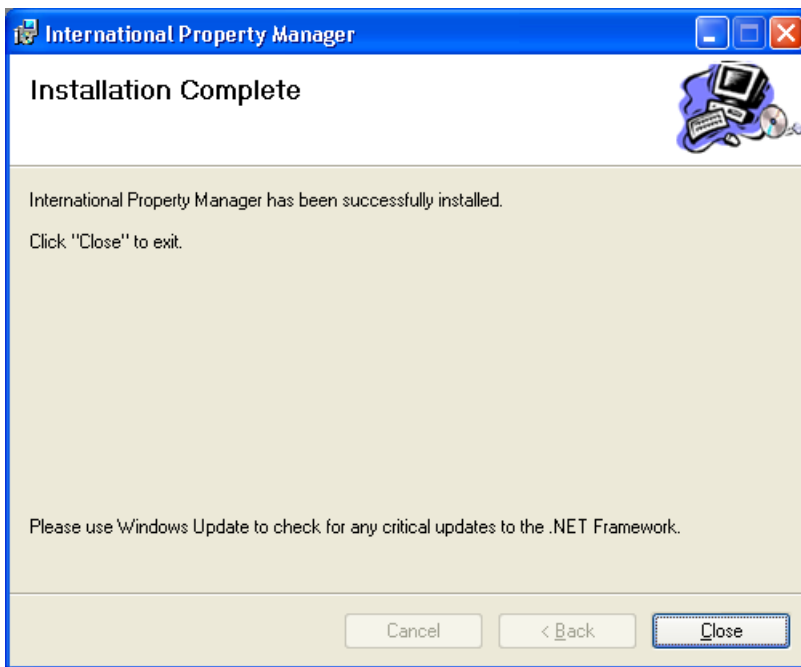
8) Click *Next* to accept the default settings.



9) Click **Next** to confirm and begin the installation.



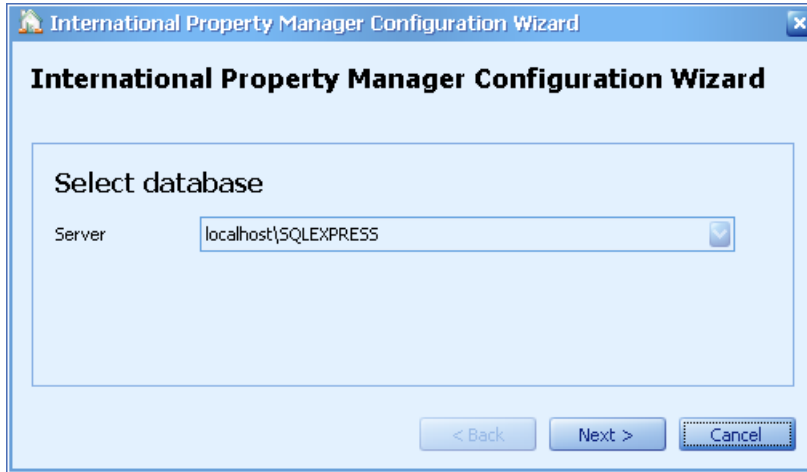
10) When the installation is complete, click **Close**.



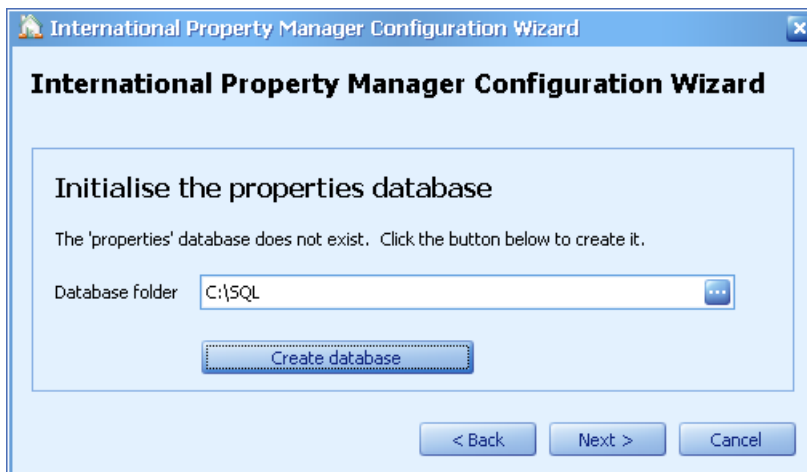
## Running International Property Manager for the First Time

The first time that you run International Property Manager, you will need to configure it. The configuration will create the SQL database and folders for the shared files.

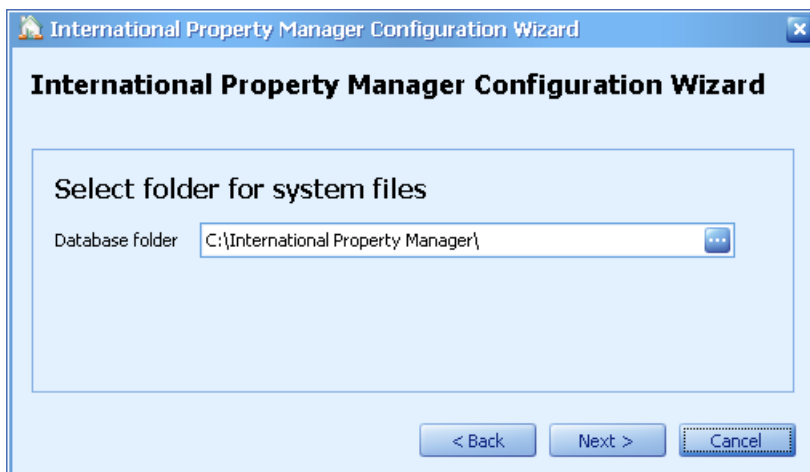
- 1) Start International Property Manager either by double-clicking the icon on the desktop or via the **Start** menu. You will see the first window of the Configuration Wizard. The wizard will provide the database server details for you. Click **Next** to continue.



- 2) If Property Manager cannot connect to the server, you will see an error message. Check that the Windows Firewall is configured to open port 1433. If it still cannot connect, contact us for support.
- 3) On the next window, choose the folder where the database will be stored, or accept the default (the folder will be automatically created if it does not already exist). Then click **Create Database**. After a short pause, you can click **Next**.



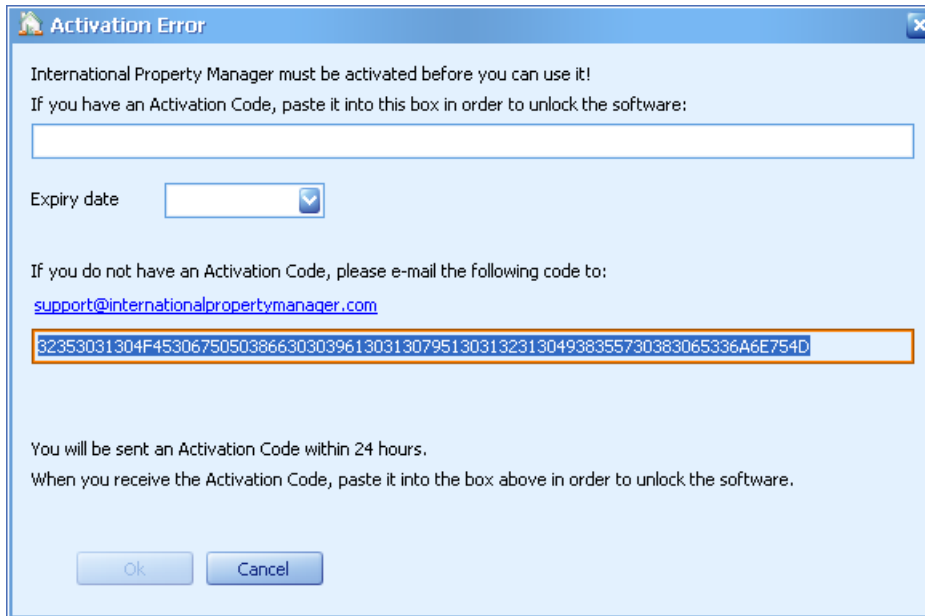
- 4) Next you must select a folder where the shared files (web content, photos etc) will be stored. You can accept the default folder or choose your own. Click *Next* to continue.



- 5) Configuration is now complete so you can click *Finish*.



- 6) The first time that you run Property Manager, it will need to be activated. You will see the following window. Click on the link provided or copy and paste the highlighted code into an email and send it to [support@internationalpropertymanager.com](mailto:support@internationalpropertymanager.com). Within 24 hours, you will receive an **Activation Code** and **Expiry Date**. Run Property Manager again, copy and paste the code from the email into the **Activation Code** box and select the **Expiry Date** from the drop-down calendar and then click **Ok**. If the code is valid, you will see the logon window.



- 7) The first time that you logon to International Property Manager, only one user exists: the User Name is **administrator** and the Password is **password**. Once you have logged on, you can open the System Manager and create the users that you require or you can continue to use the administrator user.

